



ALPHA PHI CHAPTER OF CHI SIGMA IOTA

LOYOLA UNIVERSITY NEW ORLEANS

VISIT OUR WEBSITE: css.loyno.edu/counseling JOIN US ON ORGSYNC: Alpha Phi Chapter of Chi Sigma Iota
FRIEND US ON FACEBOOK: Loyola Counseling FOLLOW US ON TWITTER: Loyola NO Counseling

November 2014

INSIDE THIS ISSUE:

- Page 1 Letter from the Board
Calendar of Events
CSI Eligibility Guidelines
Reminders
Call for Submissions
Page 2-3 Announcements
Page 3 Announcements (cont.)
& Events
Page 4 Lagniappe

Calendar of Upcoming Events

November

7: Comps

Beyond the Degree

10: Spring Registration Begins

23: Mentor/Mentee Outing

26-28: Thanksgiving Holidays

December

4: Holiday Potluck

17: Winter Break begins

January

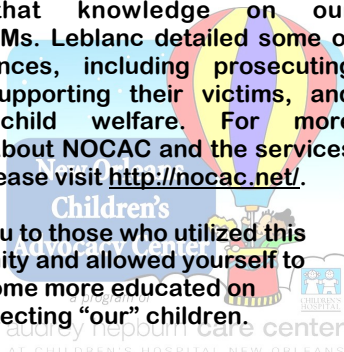
7: Spring classes begin



Mandated Reporting Session

Counselors, as mandated reporters, need to know as much as they can regarding mandated reporting laws. Luckily, we had a passionate and experienced expert who was gracious enough to share her knowledge. On October 24, Stacie Leblanc, Executive Director of the New Orleans Children's Advocacy Center (NOCAC), imparted that knowledge on our department. Ms. Leblanc detailed some of her experiences, including prosecuting offenders, supporting their victims, and promoting child welfare. For more information about NOCAC and the services they offer, please visit <http://nocac.net/>.

Thank you to those who utilized this opportunity and allowed yourself to become more educated on protecting "our" children.



LETTER FROM THE BOARD . . .

Dear fellow students, faculty and alumni,

The fall brings a welcome reprieve from the oppressive summer heat, along with festivals, football, and gumbo as the days grow shorter and our shadows longer. Our natural biological inclination is to slumber a bit more and (perhaps) move toward greater introspection.

At the same time, the holidays are upon us, and many have the opportunity to visit with family we might not have seen in quite a while. For those with family in close proximity, the holidays can provide an opportunity to reconnect in a deeper and more meaningful way. Thanksgiving, in particular, is one of those rare "major" national holidays where the only expectation is to gather together and eat – no gifts, no candy baskets, no costumes (well, none required), and no pressure to do anything except show up with the gift of your presence, and maybe a tasty pumpkin pie.

I'd like to use this space as a simple reminder to be mindful of those things that are really important, notably those relationships we find at the foundation of our humanity and within our families. I find that the most beautiful aspect of families lies in their diversity – some members are related by blood, some find connection through marriage, partnership, and mutual commitment, and others simply through the bonds of friendship. Whoever you count among your family, please do not squander any moment to be truly present.

I want to wish you all a happy holiday season – may you and your families be blessed with the gift of each other's love and compassion.

With the warmest regards,

Maria Cicio

Treasurer, Chi Sigma Iota: Alpha Phi Chapter



"The most precious gift you can give to the one you love is your true presence."

-Thich Nhat Hanh

Chi Sigma Iota Eligibility

Students are invited to join CSI during the Fall and Spring Semesters. Consideration is based on the following criteria from our chapter by-laws:

4.1 The following shall be deemed eligible for membership in the Society through endorsement of their chapter:

4.1.1 **Students:** Those students who are enrolled in a counselor education program leading to graduate degrees (Master's, specialist, or doctorate).

4.1.1.1 They shall have completed the equivalent of at least one full academic term (semester or quarter) of counseling courses carrying approved graduate credit as defined by the institution and are deemed promising for endorsement as a professional counselor whose ethical judgment and behavior will be exemplary.

4.1.1.2 They must have maintained an overall scholastic grade point average of 3.5 or better (on a 4.0 system), or the equivalent, while enrolled in the program.

Call for Submissions

Is there a topic in counseling that you want to spread the word about?

This is your chance! We want to hear it!

We are always accepting article proposals for the next issue.

Send your ideas to Bri Cortez at bncortez@loyno.edu.

LOYOLA
UNIVERSITY
NEW ORLEANS



ALPHA PHI CHAPTER OF CHI SIGMA IOTA

LOYOLA UNIVERSITY NEW ORLEANS

VISIT OUR WEBSITE: css.loyno.edu/counseling JOIN US ON ORGSYNC: Alpha Phi Chapter of Chi Sigma Iota
FRIEND US ON FACEBOOK: Loyola Counseling FOLLOW US ON TWITTER: Loyola NO Counseling

November 2014

ANNOUNCEMENTS

2015 ACA GRADUATE STUDENT ESSAY COMPETITION

Grand Prize \$1,000!

ACA has invited graduate student members to enter the annual essay competitions—Graduate Student Essay Competition and/or Future School Counselors Essay Competition. This year's topic is as follows:

"ACA recently approved a significant revision to its code of ethics. State your belief as to the fundamental purpose of ethical standards in the counseling profession and how they can be more effectively communicated to the membership and the profession."

- Graduate Student Essay Competition - Open to all ACA members enrolled in counseling-related graduate studies at an accredited college or university.
- Future School Counselors Essay Competition - Open to all ACA members enrolled in counseling-related studies at an accredited college or university leading to a career as a professional school counselor at the elementary, middle, or high school level. Only future school counselors who intend to function in preK-12 educational settings are eligible.

The deadline for essay submissions is December 12, 2014.

For additional information including full rules and application process, please visit <http://www.counseling.org/about-us/awards/student-awards>

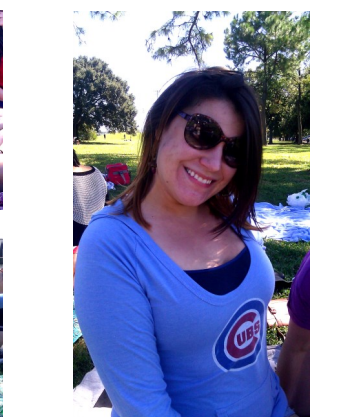
EVENTS



CSI FALL BBQ



October 4, 2014





ALPHA PHI CHAPTER OF CHI SIGMA IOTA LOYOLA UNIVERSITY NEW ORLEANS

VISIT OUR WEBSITE: css.loyno.edu/counseling JOIN US ON ORGSYNC: Alpha Phi Chapter of Chi Sigma Iota
FRIEND US ON FACEBOOK: Loyola Counseling FOLLOW US ON TWITTER: Loyola NO Counseling

November 2014

EVENTS (CONT.)



NAMI Walk Day
October 11, 2014

College Challenge winners for the THIRD year in a row!

Loyola's Counseling Department did it again; and your support helped us earn it. Together, we raised over \$3,500! Thank you to all who bowled at our fundraiser, posed for awareness pictures, volunteered your time, walked with us, and donated to our team. We are very proud to be surrounded by people who are strongly dedicated to supporting our community.



Intramurals

The Pink Frueds' Flag Football season is in full swing. The team is playing their first playoff game on 11/15/2014 with a 2-0 standing. Come cheer them into victory!

Semifinal Game: 11/15/14 @2pm, Larry Gilbert Field

CSI Induction Ceremony Wednesday, October 29, 2014



Fall 2014 inductees included:
(from left) Semonné Aguiard,
Jenn Glynn, Jen Price,
Devin Leivo, Laneir Clement,
Joe Leblanc, and Tom Cowan

Congratulations and welcome
to all of you!



ALPHA PHI CHAPTER OF CHI SIGMA IOTA

LOYOLA UNIVERSITY NEW ORLEANS

VISIT OUR WEBSITE: css.loyno.edu/counseling JOIN US ON ORGSYNC: Alpha Phi Chapter of Chi Sigma Iota
FRIEND US ON FACEBOOK: Loyola Counseling FOLLOW US ON TWITTER: Loyola NO Counseling

November 2014

EVENTS (CONT.)



The Icarus Society

Led by Ben Ng (far right), students gather during this semester's Icarus Society to converse about counseling perspectives ~ challenging conventional thought and stimulating deeper exploration.



CSI After Hours
Halloween Edition!
October 31, 2014

LAGNIAPPE

LPC Supervisors

Are you a soon-to-be graduate, recent graduate, newly employed Counselor Intern, or simply looking for a change in supervisors? If you're searching for a supervisor, Alpha Phi has something useful for you! This section of our newsletter will now contain contact information for LPC Supervisors, like this one, to aid in your search.

Check back regularly!

Tina Chaisson

LPC-S, NCC, NCSC
Telephone: 504-473-2959
tchaisson@cox.net

ACTIVE CSI Members: Ann Abbrecht · Jessica Alvendia · Caitlin Bach · Katie Bowman · Leigh Boyer · Kristen Centanni · Maria Cicio · Bri Cortez · Eleanor Cushenberry · Lesley DeMartin · John A. Dewell · Christine Ebrahim · Chelsea Faught · Lauren Finan · Sarah Finney · Marlin Giacona · Suzanne Hammel · Kerry Hegarty · Carly Herron · Brandie Hicks · Lynsey Hinnenkamp · Blaire Hirstius · Summer Keenan · Nasima Khan · Tracy Kinamore · Steffie Koch · Justin Levitov · Megan Loos · Megan Mathews · Molly Sanders · Marinn Mehrtens · Heidi Molbak · Sharon Mole · Ben Ng · Jessica Nystrom · Fran Phares · Tina Robinson · Nina Stewart · Sean Tate · Meredith Vizzini · Becca Weingard · **THANK YOU!**